

Need a Mortgage in principle
to make offers? Call us now
for quick assistance!
0121 775 0101



Do you need to sell?
Start your journey now!
Call us we can help.
0121 775 0101



SCAN FOR MORE INFO
SIZE - 912 Sq Ft
TENURE - Leasehold with Freehold upon Completion
GROUND RENT - £40 per annum
COUNCIL TAX - Solihull Metropolitan Borough Council - C
BROADBAND - Upload Max 1000Mbps
Download Max 1000Mbps
MOBILE - O2 Vodafone
EPC - D - 56
PARKING - For at least 3 Cars
FLOODRISK - Very Low
SERVICES - Mains
COVENANTS - N/A

Are you an investor
interested in expanding your
portfolio?

**Call 0121 775 0101 to provide your
investment criteria for alerts.**

MILHOLME GREEN

Solihull, B92

This well presented, three bedroom end terrace home offers a fantastic opportunity for first time buyers, investors or those looking to downsize. Thoughtfully designed to maximise space and comfort, this property benefits from a freehold title upon completion.

FEATURES

- A Tastefully Presented End Terrace Property
- Ideal First Time Buyer, Investor or Downsizer Opportunity
- Kitchen Overlooking the Front
- Spacious Lounge/Diner with Door to Garden
- Two Generous Double Bedrooms & Good Sized Third
- Modern Shower Room
- Private West Facing Garden with Woodland Beyond
- Ample Driveway Parking & Single Garage
- Convenient Location & Walking Distance to all Local Schools
- FREEHOLD ON COMPLETION



SCAN TO **VIEW OUR
WEEKLY FILMS &
SUBSCRIBE**

Sneak Peeks

Every week, we unveil "Sneak Peeks," a feature showcasing exclusive properties before they hit Rightmove and other platforms.

The Landlord Club

Join our Landlord Club for weekly updates on legislation, market trends, and our Letting Director's 'Investment Pick of the Week' for optimal ROI.

HTSPMD

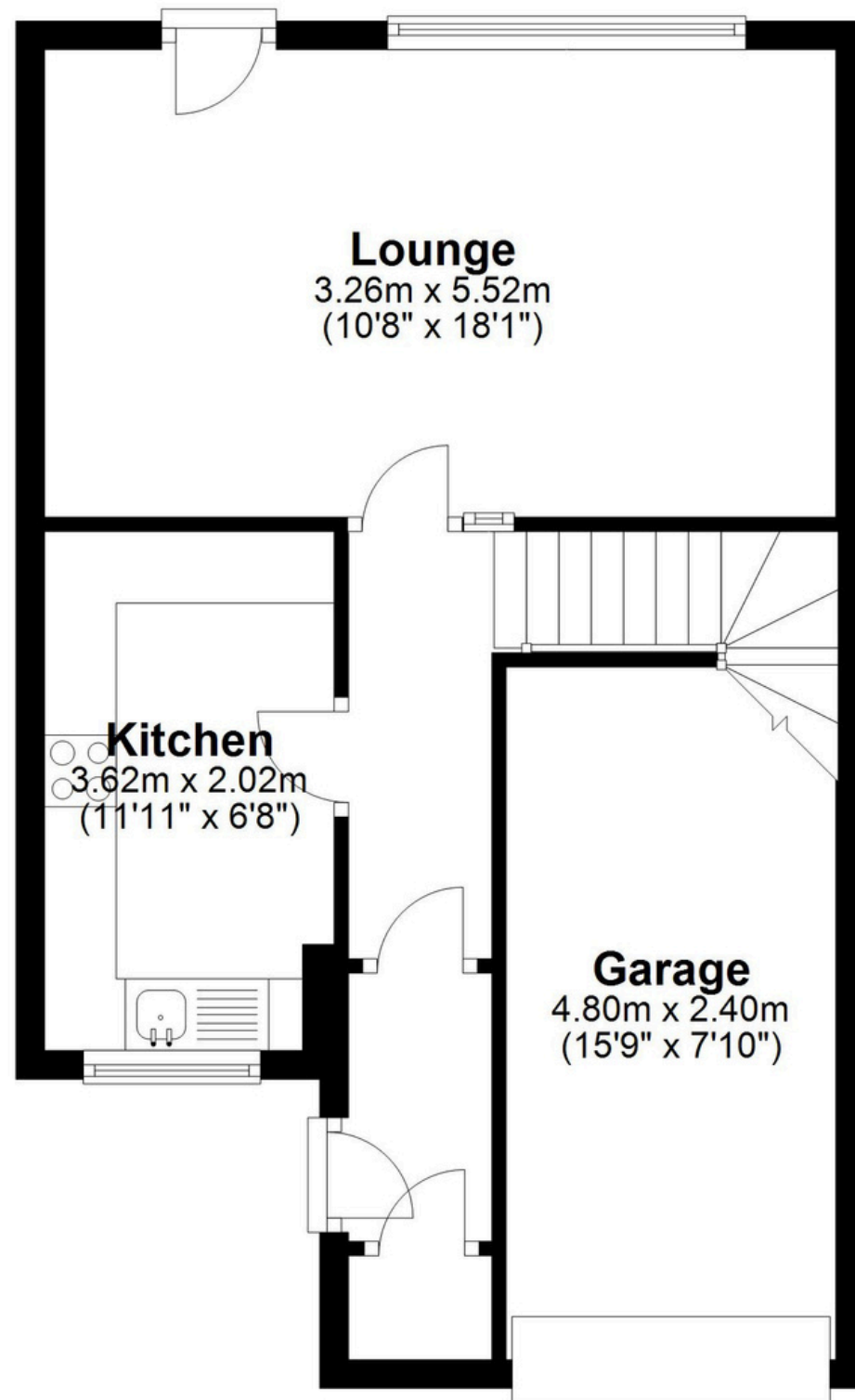
Tune into 'How's The Solihull Property Market Dom' weekly for a quick, insightful snapshot of the market.

The Mortgage Update

Get weekly insights and the best deals with our Mortgage Update, your shortcut to navigating the complex mortgage landscape confidently.

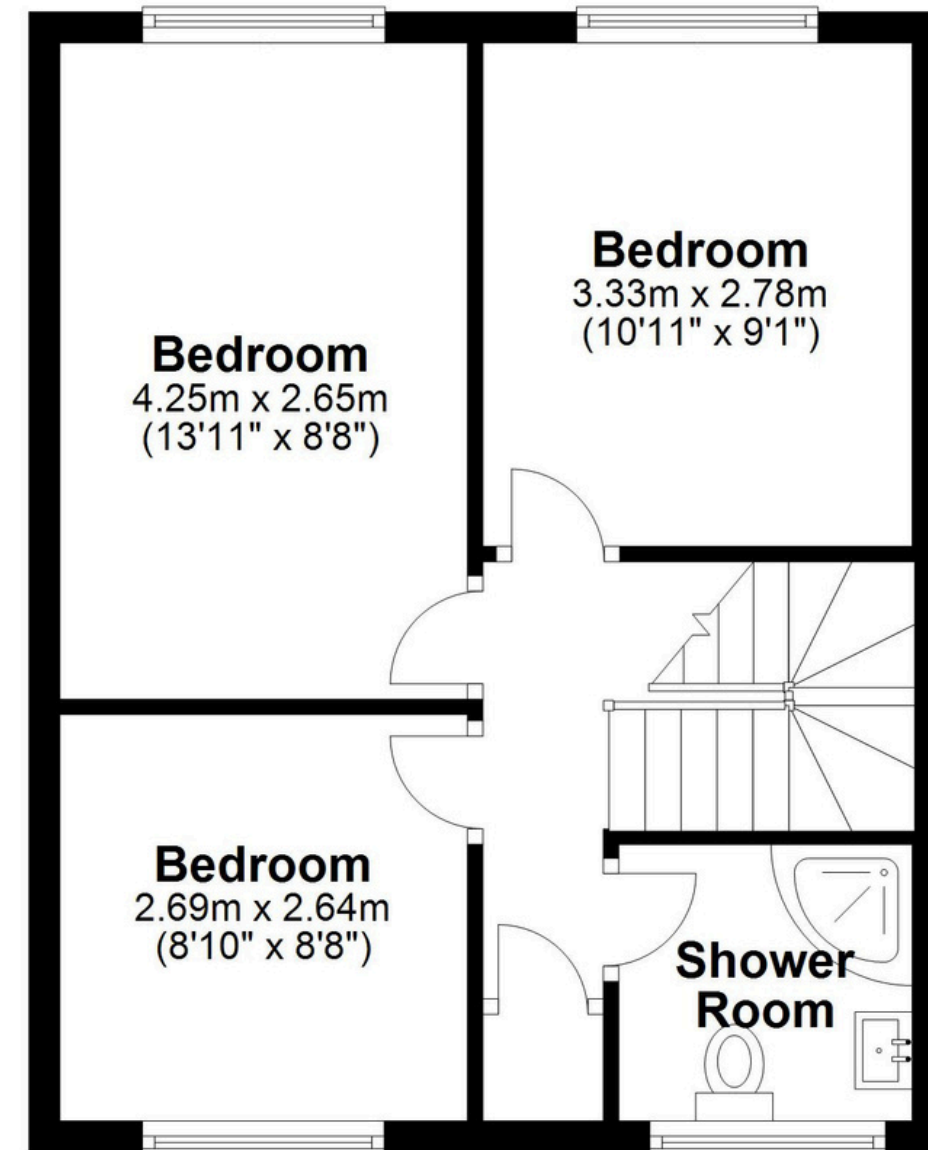
Ground Floor

Approx. 46.0 sq. metres (495.5 sq. feet)



First Floor

Approx. 38.7 sq. metres (416.5 sq. feet)



Total area: approx. 84.7 sq. metres (912.0 sq. feet)

This floor plan is for illustration purposes only, this is not intended to be a measured/scaled survey or comply with RICS guidelines. All measurements (including total floor area) openings, orientation and floor area are approximate. No details are guaranteed, they cannot be relied upon for any purpose and do not form part of any agreement. A party must rely upon its own inspection(s). No responsibility is taken for any error, omission, or mis-statement.
Plan produced using PlanUp.